

Portfolio

SUMMER 2011

PRATT HOUSE

Description

The Pratt House project has been a laboratory for investigating the variety of ways to make a dwelling more efficient in its energy consumption and output. The initial structure was a 160-year old Gunsmith's cottage and the goal was to reclaim as many materials as possible while creating an air-tight, super-insulating home.

Specs

750 square feet of treated floor area

\$150,000 budget

R-45 minimum insulation level throughout

12-1/4" (SIP) walls and roof

3 north windows with movable insulation

3 south openings w/ moveable insulation

1 Lifebreath Heat Recovery Ventilator

1 Stielbel Eltron 21 tankless hot water heater

0 conventional heating systems

- 01 dudley street context
- 02 second level living space
- 03 burnt pine siding
- 04 window detail
- 05 rear elevation



JP GREEN HOUSE

Description

The JP Green House will be a demonstration home for Jamaica Plain and the surrounding neighborhoods. Placetaylor has utilized the concepts that were learned in the Pratt House project and are now applying it in a way that is conducive to educating. Not only will this be a home for a large family, but it will have a community center where people can congregate and learn how to implement more sustainable strategies and practices into their lives.

Specs

1,300 square feet of treated floor area

\$167,000 budget

R-50 minimum insulation level throughout

8 windows high efficiency Thermotech units

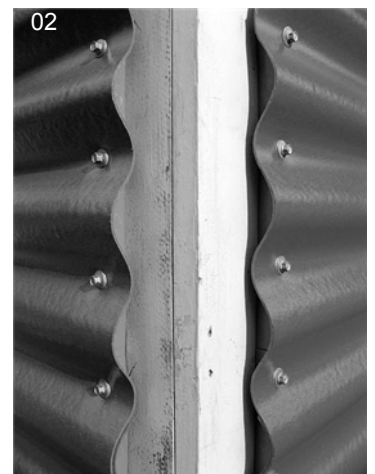
11 recycled windows w/ site movable insulation

2000 sqft corrugated polycarbonate siding

1 Zehnder Comfoair 350 Heat Recovery

1 Daikin Altherma air-to-water heat pump and hot water heater

- 01 bourne street context
- 02 corrugate polycarbonate
- 03 elevation during construction
- 04 catherine st. view
- 05 corner detail
- 06 original roof structure



POWAHOUSE

Description

The Powahouse is a 3 unit dwelling in the Fort Hill neighborhood of Roxbury, MA. It features one-of-a-kind condos with private entries, sunny living spaces, and thoughtful construction details. The building is durably clad in torrefied wood, terra cotta and fiber cement. It is currently in the design phase with plans to begin construction in late summer, 2011.

Specs

4100 square feet

3 unique condominium units

1 roof deck

1 courtyard open to the sky

1 Juliet balcony

4 solar hot water panels

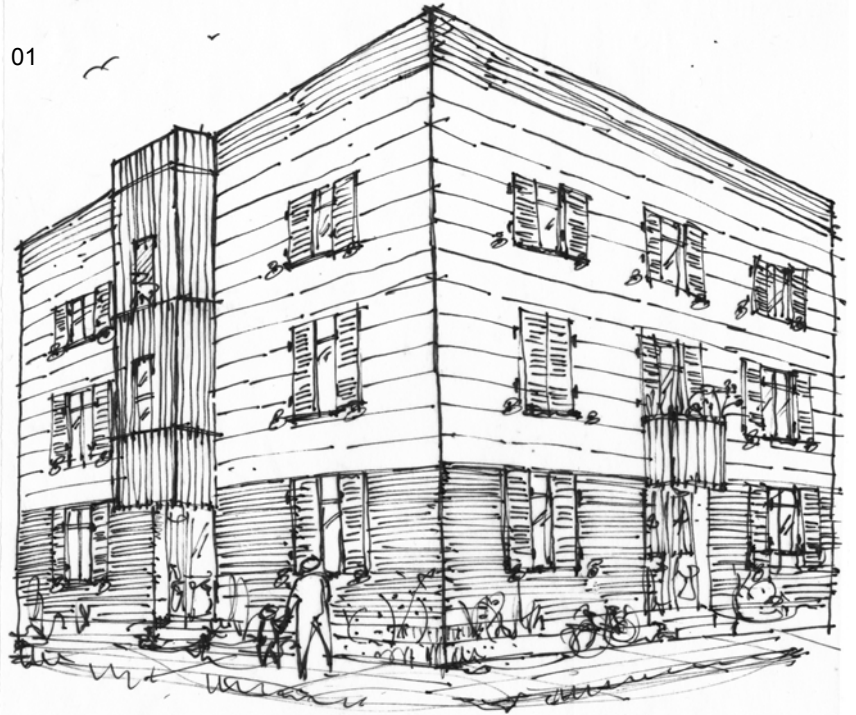
1% of budget allocated for public art

01 & conceptual sketch

02 interior of unit Z

03 interior of unit X

01



02



03

